



Winter Wonderland in New England

RIFGC 2024 February Newsletter



President's Message

I am always amazed how quickly the months have flown by. Again, I find myself behind the eight-ball trying to play catch up with all that the clubs are actively participating in. Whether it is club meetings, green workshops, holiday gatherings, and/or community outreach, my heart is full. Speaking of which before I go any further, the Crossroads Family Shelter was bowled over with our generous donations of 189 pairs of socks. Thank you again for being so giving. Any time of the year it is always valuable to give to those who are less fortunate.

On another note, all who must commute to and from the East Bay I feel your pain. Over the years so many would say to me, "you came all this way over the bridge, from Cranston" who knew it would take on a whole new meaning.

Outings I was able to attend were green workshops, floral design with the federations Design Study Group, NGC Judges Symposium in MA, Federation of G.C. of Conn. Awards Luncheon, Design Workshop with International Designer Hitomi Gilliam, and so much more. I was most appreciative to do the honors of installing the officers for their upcoming term at the Quononoquott Garden Club Jamestown. Upfront I need to be honest I totally fumbled the club's name (more than once) and have been practicing but do not hold me to it. It was a lovely luncheon and enjoyable conversation seated with the outgoing and newly installed Co-Presidents.

Seed Catalogs have arrived which always gets me thinking about spring. Yes, there are less than 60 days till spring. At our house seed trays are already prepped for the upcoming season. We primarily source 80% of our annuals and vegetables from our own seed gathering. Many of our heirloom tomato plants will now be 8th generation from our own seed stock.

Remember to consider heirloom and native varieties when planting to promote the best food for the pollinators.

I am now on a dead run with my calendar and the federation calendar is filling up with work, meetings, events, trips, state flower show and more. Oh! I cannot forget my daily walks to shed all those extra pounds from the holidays. Who is kidding who I am still working off the clam cakes from this summer.

As I submit this message and it goes to print RIFGC's monthly board meetings that are held at the Roger Williams Casino have resumed after the winter break. **ALL ARE WELCOME TO ATTEND.** I try to run a tight meeting with loads of information, and we are thrilled to announce that Wet Your Whistle open discussion meetings are moved from a zoom format to a table discussion immediately following each meeting. It is the best way to meet face to face to have a lighthearted but productive exchange of ideas. Please if you have a topic you want to throw in the hat let me know.

We are offering a couple of day trips from Rhode Island. March 1 st Flora in Winter at the Worcester Art Museum.

An adventures trip to the NY Botanical Gardens on June 4 th. Both flyers have gone out in an email blast as well as in this newsletter.

RIFGC Judges Council will have a Horticultural Show on June 13 th at the Hattie Ide Chaffee Home in East Providence. Hattie Ide Chaffee G.C. will be working with J.C. to make this a great show. All members are welcome to participate in the show. It is a wonderful way to show off your green thumb by entering your horticultural specimens. More information will follow. It is in the works that our June business meeting will be held there as well. So, let us make a day of it.

Newport Flower Show will be back at Rosecliff Mansion this year. So, look for the flower show schedules at newportmansion.org/events in the near future. With immense success RI shined at last year's show by entering in floral design, botanical arts, horticulture, and club entries. Let us see if we can do it again.

What a great lead way into our RIFGC 2024 Design Specialty Flower Show, "Rhode Island in Bloom." April 4-7 th at the RI Convention Center. This is our biggest fundraiser that helps support all our endeavors.

Kathleen Damiani, VP and Co-Chair for the flower show has been busy learning the ropes when it comes to what all makes up the behind-the-scenes preparation for this show. Blakely Szosz, former Pres. of RIFGC, has written a vibrant schedule that will immerse us all in the artistry of floral design and highlights all that makes our state, "Little Rhody" so special. Blakely wears many, many hats

and I as a Co-Chair I could not be more grateful for her time and devotion to the federation's largest fundraising event.

This is where all of you as members come into play. We have a plethora of talented designers, so please enter a class. Do you have the gift of gab, volunteer to host with other members. When you host you also receive a free ticket to both the flower and home show, meet members from other clubs and learn what a flower show is. Extra time on your hands, we always need help leading up to the show. You know I could go on and on, you all get the idea.

I know I sound like a broken record but please make sure the Presidents Weekly Email Blast is forwarded each week to your membership. The flyers are time sensitive with loads of valuable information. This forum makes it so much easier, sustainable and with no waste, Just the thought makes my head spin trying to get this information out by snail mail or the monthly folder you would pick up at the board meeting.

I am looking forward to the rest of the season, planning for the next and trying to keep my mind where my feet are planted. I am super excited to keep working for all of you as president.

Best,
Judy Gray, RIFGC President



A Girl's Gotta Do What A
Girl's Gotta Do To Win
The Blakely Szosz Award
of Sustainability at The
RIFGC Flower Show
Photos by Pixie Medeiros

A decorative border of orange flowers with eight petals, connected by thin orange lines, framing the central text. The flowers are arranged in a rectangular path with some additional flowers at the corners.

SAVE THE DATE

RIFGC ANNUAL AWARDS LUNCHEON

APRIL 25, 2024

Venus de Milo
Swansea, MA



PLEASE JOIN US

Meeting, Awards Ceremony, Food,
Spirits, Friendship, Floral
Demonstration, Raffles, and More.

February 22

RIFGC Business Meeting at Roger Williams Casino

March 1

Trip to Flora in Winter Worcester Art Museum
Contact sandi.tinyk7@gmail.com, see flyer for details

April 4-7

RIFGC Flower Show *Rhode Island in Bloom* (March 24-9th working the show).
[Click here for the schedule.](#)

May 15-23

Chelsea Flower Show Trip

February 22-24

Connecticut Flower Show
Bursting into Spring

March 2-10

Philadelphia Flower Show

April 25

RIFGC Annual and Awards Meeting at Venus de Milo, 75 Grand Army Republic Highway, Swansea MA

May 18

West Cranston GC Small Standard Flower Show

Feb 29 - March 3

Flora in Winter Worcester Art Museum Worcester MA

March 11

Rick Sammons smartphone webinar at 4pm ET, \$10 fee per person

April 26-29

Hameho GC presents Art in Bloom Show Barrington Public Library, see flyer for details

June 1-7

NGC Convention Denver, Former Pres. Sheryl & Vera and I are attending. All are welcome, click [here](#) for Convention information.

March 18-20

Educational & Environment Day at Roger Williams Casino

March 28

RIFGC Business Meeting at Roger Williams Casino

May

No RIFGC Business Meeting

June 4

Trip to NY Botanical Gardens contact sandi.tinyk7@gmail.com, see flyer for details

June 13

RIFGC Business Meeting
(new date due to NGC
Convention)

June 13

RIFGC Judges Council
Horticulture Show at Hattie
Ide Chaffee Home, East
Providence

June 21-23

Newport Flower Show At
Home returning to Rosecliff
Mansion. [Click here for
more info.](#)

October 23 & 24

NEGC Annual Meeting
hosted by RIFGC Crown
Plaza, Warwick RI

RHODE ISLAND IN BLOOM

An NGC Design Specialty Flower Show

Presented by
Rhode Island Federation of Garden Clubs, Inc.
President Judy L. Gray



April 4 - 7, 2024

Thursday & Friday April 4 & 5, Noon-9PM
Saturday April 6, 10AM-9PM
Sunday April 7, 10AM-5PM

Admission Free with ticket to The Rhode Island Home Show
RI Convention Center, 1 Sabin Street, Providence RI

Member: National Garden Clubs, Inc., New England Garden Clubs, Inc.

Herring Gull, Larus Argentatus

Did you know that there are at least two dozen different species of Gulls in North America. Some are rare and not seen in our area, but about twelve may be seen in New England.

Spiraling above a fishing boat or squabbling at a dock or parking lot, Herring Gulls are the quintessential gray-and-white, pink-legged “seagulls.” They’re the most familiar gulls of the North Atlantic and can be found across much of coastal North America in winter.



Handsome fella!

The Herring Gull has extended its breeding range southward along the Atlantic Coast and may be displacing the more southern Laughing Gull from some areas. At the northern end of its range, however, the Herring Gull is itself being displaced by increasing numbers of the Great Black-backed Gull.

Breeding brings special dietary challenges for Herring Gulls. During courtship, males feed their mates, losing fat reserves in the process. Then egg-laying reduces the females’ protein and bone calcium, and they seek out marine invertebrates and fish to replenish stores. After the chicks hatch, both parents feed them day and night for up to 12 weeks, splitting foraging shifts to offer each chick up to half a pound of food per day as it nears fledging.

Sibling rivalry is a problem in the bird world, too. The third chick in a Herring Gull clutch can have it especially tough. While the first two chicks hatch the same day, the third is born a day or two later, weighs less, gets less food, and grows more slowly.

Herring Gulls are one of the most familiar gulls of the East Coast and many people just call them “seagulls.” Herring Gulls prefer drinking freshwater, but they’ll drink seawater when they must.

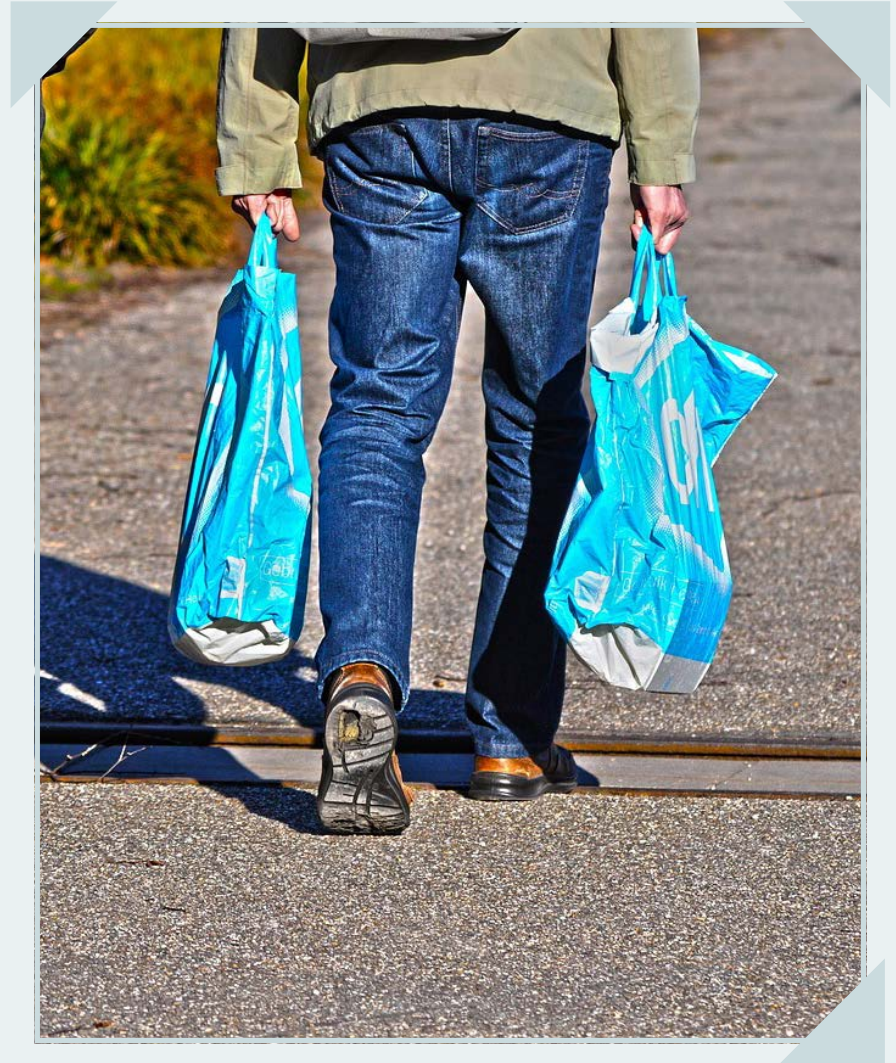
The oldest recorded Herring Gull was at least 29 years, 3 months old when it was seen in the wild in Michigan in 2015 and identified by its band. It was originally banded in Wisconsin in 1986.

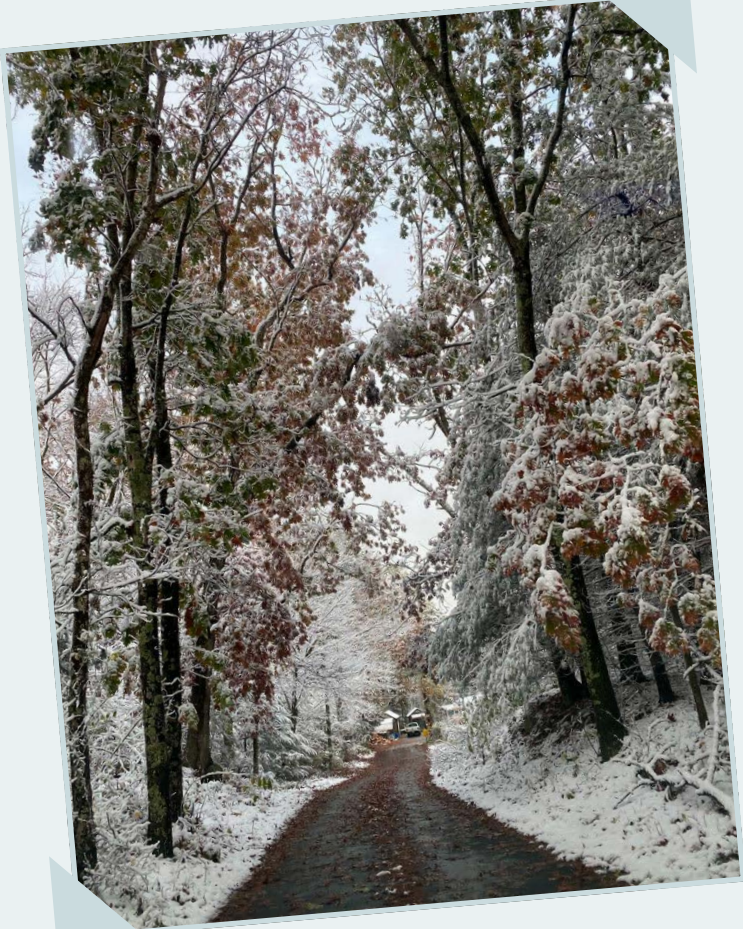
Bag the Plastic!

As of January 1st Rhode Island's plastic bag ban took effect. This has been a long time in the making so by now we all have our share of reusable grocery bags stashed in our cars. For most of us this is nothing new as half of the state's cities and towns have already banned plastic bags.

According to the law, any retail sales establishment that fails to meet the requirements of these regulations will be subject to financial penalties. It seems that farmers markets, bazaars, festivals and yard and tag sales are not considered retail sales establishments and are exempt from the law. Bags used to hold vegetables, pastry, bread and meat bags are among some that are excluded from this ban.

This law passed in 2022 and businesses were given extra time to use up the bags they already purchased. This enactment will help take a more plastic out of our environment. Plastics that pollute our streets and waterways.





Hattie Ide, Chaffee HC

Reformation in the CRMC

Over the past months the Coastal Resources Management Council (CRMC) has been in the news quite a bit. It is the state agency that manages and protects our 400 miles of coastline and 3 miles out to sea. Currently the CRMC director and staff report to a politically appointed council that are not required to have any expertise in coastal issues. This situation creates the ugly back room deals that tarnish our state's image. There have been two high profile examples of CRMC's poor deal making.

One was the approval of Champlin's Marina expansion on Block Island. The Champlin deal ignored the interests of the town of New Shoreham and was ultimately tossed out in RI Supreme Court. Another was the deal for the Revolution Wind underwater cable. Luckily the agreement was scrutinized and adjusted allow the state to implement a \$2 million fee for a 25 year lease. In the past it took five years for Matunuck Oyster Bar to get approval for expanding their aquaculture operations in Potters Pond. Another aquaculture application for a half-acre farm off Nayatt point took eight years and was only approved after going to Superior Court. Legislation expected to be introduced later this month would eliminate the politically appointed council and make CRMC a department level agency much like DEM. This will allow CRMC to report directly to the governor and streamline the decision making process.



Streamlining is only part of the solution, the agency is under staffed and underfunded so enforcement and coastal monitoring in our state will remain weak. Providence Journal reported in December that RI Attorney General Peter Neroni plans to step up advocacy for CRMC reform. This reform will help ensure that our state's most significant natural asset is protected for future generations.



Mrs. Perry's Garden, Bristol, NC

Bad Martha!

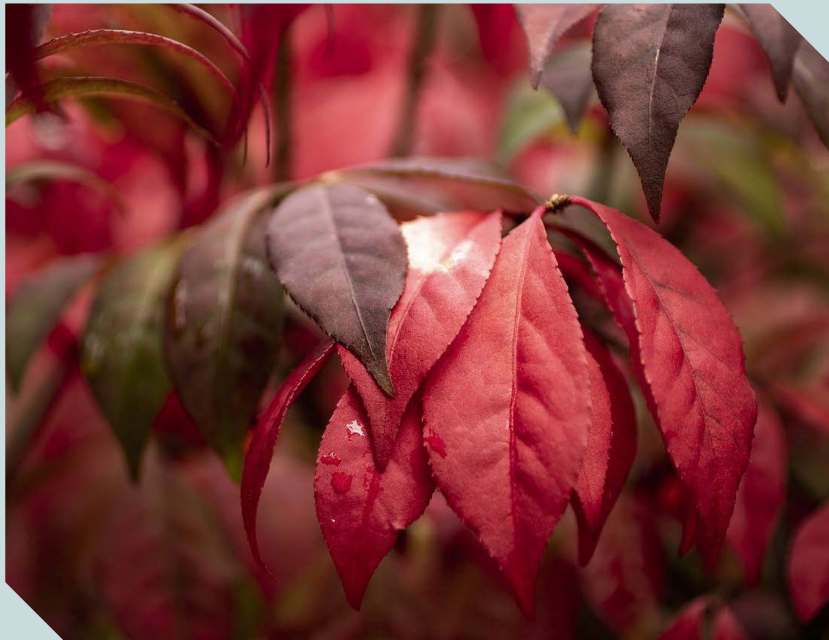
Martha Stewart is well-known for her horticultural and landscape design pursuits across her multiple properties. This month's invasive species made a celebrity appearance on her social media. Martha posted a wonderful photo of a woodland horseback ride. The photo showed tall trees with the last golden leaves just hanging on, and a brilliant flush of rosy pink and red bushes along the forest floor. Those brilliant red bushes are *Euonymus alatus* commonly called, burning bush, winged burning bush or winged spindle tree.

Burning bush has showy fall color and striking red berries giving it a fall and winter design interest. It grows very well in almost any soil and under all but the heaviest shade. Its berries and shade and soil tolerance make it very good at spreading and forming dense thickets in forest edges. The flowers of burning bush are not showy. The twigs have very distinctive flat corky projecting fins. This is why *Euonymus* is referred to as winged burning bush or winged spindle tree. Burning bush has a round compact growth form, typically 15-20 feet tall. The leaves are simple, oppositely arranged and have small serrated or crenulated edges.

Birds and wildlife like the bright red berries almost as much as landscape designers do. Birds spread these seeds into forest edges and roadsides where burning bush easily outcompetes native species. The winged red bush spreads quickly into dense thickets along the forest floor. Our native sedges, grasses, and wildflowers



can't grow beneath these thickets. No native plants means no native bugs, fungi, or leaf litter. That means no pollinators! These thickets often have bare soil underneath them. Bare earth starves the ground of the natural mixing and decomposition that builds a healthy, rich organic soil. Diversity makes healthy, resilient, ecosystems and this is a great example of how invasive species deny that critical diversity.



There are alternatives to planting burning bush! We have our own native *Euonymus americanus*, which features a unique pink fruit. Staghorn sumac (*Rhus typhina*), is a common roadside species with a red fall foliage and a big spiky red fruit. The fruit can be brewed into a tea that is rich in vitamin C. Unfortunately, I can't imagine that it's particularly delicious. If you are after winter interest, then American holly (*Ilex verticillata*) keeps small bright red berries that look just like burning bush berries. Red osier dogwood (*Cornus sericea*) has striking red stems that provide another great fall and winter color. Don't be like Martha Stewart, plant native!



Plum
Beach
Holiday
Greens for
Wickford
Village



Plum Beach GC gathered to celebrate
the holidays and to honor members
with 20 years or more



Community Holiday
Greens

Rehoboth GC



Gentian GC



Barrington GC



*Comfort and Joy, Meals on Wheels
included holiday bouquets by
Plum Beach GC*



Barrington GC
Holiday
Decorations for
those that have
served our
country.



"Sock It To 'Em Sock Drive"

At the Holiday Brunch

189 Pairs of Socks



Thank you for this much needed
donation. So many families will
benefit from your kindness.

Crossroads Family Shelter





Need a breath of Spring?

Join Rhode Island Federation of Garden Clubs' trip to *Flora in Winter* at the WORCESTER ART MUSEUM on Friday, March 1, 2024! The New York Botanical Garden's special exhibition this year promises picture-perfect moments in the company of your fellow Rhode Island Federation of Garden Clubs members. Follow us down the rabbit hole as we explore the garden's collections and engage your curiosity about science and nature on this garden-wide adventure inspired by the classic tale of *Alice's Adventures in Wonderland*. Journey through mind-bending horticultural displays and mesmerizing art installations of outsize scale and unusual perspective in and around the iconic Haupt Conservatory, Mertz Library Building and its historic 250-acre landscape.

This one-of-a-kind experience will include an all-garden pass admission, guided tour of the Wonderland-Curious Nature Exhibition, and a Garden Market Basket Lunch at the Garden's Terrace Room. Also included in the fee will be motor coach transportation and driver tip.

We will depart from 2 places, from the Barrington Shopping Center on County Road, at 6:45 a.m. (motor coach will report at 6:35) from parking lot, and from the Park & Ride lot on Airport road, off Post Road in Warwick. There will be a rest stop on our way to NY, and plan to arrive by 11:00AM. Departure will be at 4:00PM, and will be stopping for a "fast food" dinner stop. Return will be approximately 8:30-9:00, depending on traffic.



Design by Judy Gray

FEE: \$120. Includes museum admission, guided tour, luncheon, trip escort, motorcoach transportation and driver tip. Deadline to register is February 9, when registration for the trip will be opened to the general public. Send check, payable to RI Federation of Garden Clubs, to Paul Nunes, Treasurer, 920 County St., Seekonk, MA 02771.

Print this page and cut out dotted section to fill.

REGISTRATION FORM

Name: _____

Garden Club: _____

Telephone Number: _____

Email: _____

I wish to board the motor coach in:

☐ Barrington

☐ Providence

I am closing my check at \$120 for ____ persons.

Total enclosed: \$_____

Wonderland: Curious Nature

Tuesday, June 4, 2024

The New York Botanical Garden's special exhibition this year promises picture-perfect moments in the company of your fellow Rhode Island Federation of Garden Clubs members. Follow us down the rabbit hole as we explore the garden's collections and engage your curiosity about science and nature on this garden-wide adventure inspired by the classic tale of *Alice's Adventures in Wonderland*. Journey through mind-bending horticultural displays and mesmerizing art installations of outsize scale and unusual perspective in and around the iconic Haupt Conservatory, Mertz Library Building and its historic 250-acre landscape.

This one-of-a-kind experience will include an all-garden pass admission, guided tour of the Wonderland-Curious Nature Exhibition, and a Garden Market Basket Lunch at the Garden's Terrace Room. Also included in the fee will be motor coach transportation and driver tip.

We will depart from 2 places, from the Barrington Shopping Center on County Road, at 6:45 a.m. (motor coach will report at 6:35) from parking lot, and from the Park & Ride lot on Airport road, off Post Road in Warwick. There will be a rest stop on our way to NY, and plan to arrive by 11:00AM. Departure will be at 4:00PM, and will be stopping for a "fast food" dinner stop. Return will be approximately 8:30-9:00, depending on traffic.



FEE: \$195. Includes garden admission, guided conservatory tour of the special exhibition, lunch, motorcoach transportation and driver tip. Deadline to register is March 22, when registration for the trip will be opened to the general public.

Send registration form and check, payable to RI Federation of Garden Clubs, to Sandi Tinyk, 7 North Lake Drive, Barrington, RI 02806.

Print this page and cut out dotted section to fill.



*Sign up before
it's too late!*

REGISTRATION FORM

Name: _____

Garden Club: _____

Telephone Number: _____

Email: _____

I wish to board the motor coach in:

☐ Barrington

☐ Providence

I am closing my check at \$195 for ____ persons.

Total enclosed: \$_____

Winter Horticulture Report

January

- + Now is the time to enjoy being dormant. You need a cup of tea, a comfy chair by the fire, and your 2024 seed and plant catalogs. I've put down the straw mulch and covered it with the Christmas tree's branches; now I am enjoying my Kitchen Garden Seeds catalog from John Scheepers.
- + Research how to care for these various plants you have. Here is a good start finding sources- the American Horticultural Society
- + Research "how to prune (whatever you need to prune.)" <https://ahsgardening.org>

John Scheepers Kitchen Garden Seeds

Habitat Flower Garden
Happy Human Habitat Flower Garden



AMERICAN
HORTICULTURAL
SOCIETY

- + Check on your stored bulbs, corms and tubers.
- + Walk your garden checking for frost-heaved plants; gently stomp them back into the soil so their roots won't freeze.
- + Gather your houseplants, put a rag in the bottom of the sink to catch soil, spray wash dust off of the plant leaves. If the plant is too big use a damp microfiber cloth to wash leaves. Don't do this to African violets- they don't like it. Don't do this to cacti- you won't like it. Mist houseplants frequently.
- + Propagate new houseplants from cuttings now for Garden Club plant sale.
- + Order your seeds and plants before the ones you want are gone. grows very well in almost any soil and under all but the heaviest shade. Its berries and shade



and soil tolerance make it very good at spreading and forming dense thickets in forest edges. The flowers of burning bush are

February

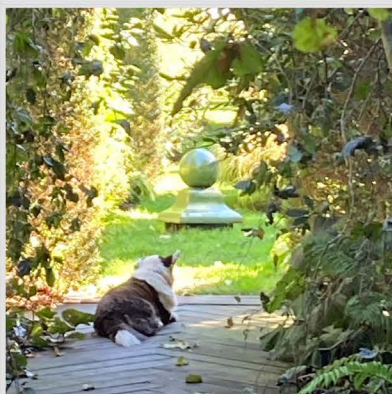
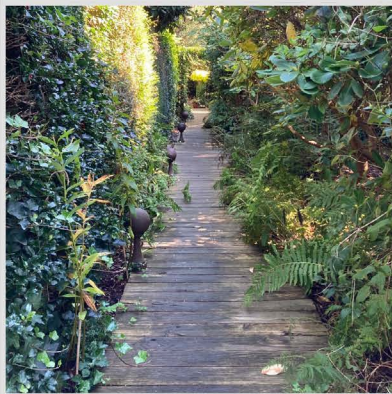
- + Order summer blooming bulbs.
- + Get your soil tested. Rhode Islander use [University of Massachusetts Soil Testing](https://www.mass.gov/info-details/massachusetts-soil-testing). Make changes to the soil as suggested by test results.
- + If your plant cuttings have good roots, pot them up.
- + If you have a garage or basement out of the weather, spruce up garden art and furniture with new paint.
- + Sharpen tools.
- + Some seeds can be started indoors this early. Here

is the link I like for seed planting, but enter YOUR zip code on the page. <https://www.almanac.com/gardening/planting-calendar/zipcode/02809>

March

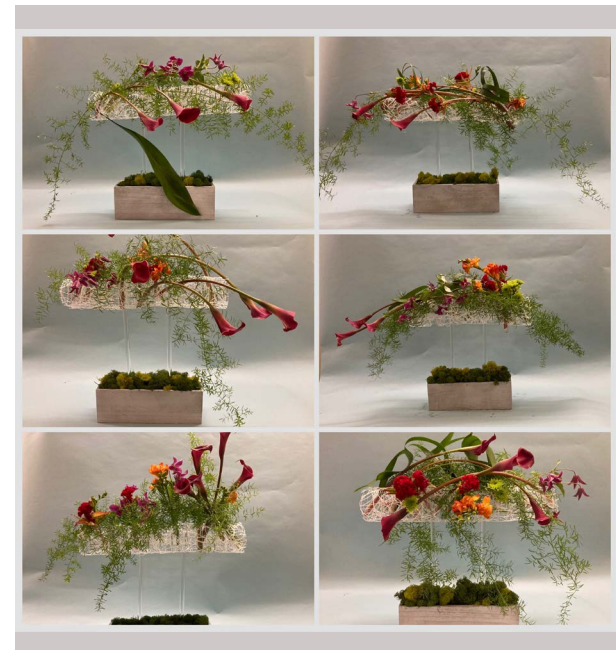
- + Put your research to work and get pruning! **DON'T PRUNE SPRING FLOWERING TREES AND SHRUBS!** You'll cut the blossoms off. Wait to prune them until after they flower.
- + Pot up all your nicely rooted cuttings and hit the thrift stores for some nice pots for them.
- + Start seeds indoors.
- + Seeds of cool season veggies may be planted directly in the garden when the temp reaches 55 to 65 degrees. (Buy yourself a nice soil thermometer.)







October Design Workshop



Final Designs

Go Green - Plant America

Theme of NGC Pres. Brenda Moore

How Do You Become a Member? What Are the Dues?

All State Members are members of NGC, Inc. Dues for NGC are included in your club dues.

What are the Benefits of Being a Member?

The website offers NGC webinars, blogs, programs, college scholarships, youth contest, awards, grants, parliamentary guidelines, guide for Club Presidents, and so much more.

Are there Schools?

Yes, schools are offered in environment, gardening, landscape design, and flower shows.

Do they have a Magazine Subscription?

Yes, The National Gardener will come to your inbox. It's free to all members, subscribe by going to: <https://gardenclub.org/national-gardener>

Is there a NGC Store?

Flower Show Awards & Supplies, Jewelry, Books, Gifts and Calendars.



National Garden Clubs

OFFICIAL WEBSITE

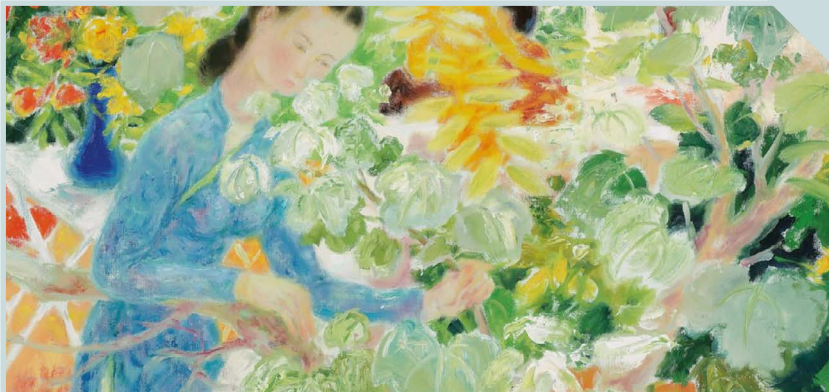
How to Connect NGC, Inc.?

[Online at gardenclub.org](https://gardenclub.org)

[On facebook at facebook.com/NGCSOCIALMEDIA/](https://facebook.com/NGCSOCIALMEDIA/)

[On Instagram at instagram.com/nationalgarden](https://instagram.com/nationalgarden)

[On Pinterest at pinterest.com/natl gardenclubs](https://pinterest.com/natl gardenclubs)



art in
BLOOM
at the Library

APRIL 26-29, 2024

Opening
Friday at noon
Closing
Monday at 5 pm

CELEBRATE THE COMING OF SPRING
WITH ART AND FLOWERS!

The Hameho Garden Club and Barrington Public Library have collaborated to showcase floral interpretations of artwork created by talented art students from Barrington High School.



BARRINGTON PUBLIC LIBRARY

281 COUNTY RD. BARRINGTON RI



A Small Standard Flower Show

Presented by
Western Cranston Garden Club

Saturday, May 18, 2024
10:00 AM - 4:00 PM

Shepherd of The Valley Church
604 Seven Mile Road, Hope, RI
Admission: \$5.00

Members of
Rhode Island Federation of Garden Clubs, Inc.
New England Garden Club, Inc
National Garden Club, Inc

Ruth Anderson Workshop

“Design with nature as your guide, Also, listen to your flowers.” Hitomi Gilliam.

This fall the Judges Council was graced with a design workshop with Hitomi Gilliam, Japanese/Canadian floral artist and innovator. She is a world-famous floral designer with an unyielding passion for floral education, and sharing her knowledge about flowers, design, art, mechanics, and techniques.

Her creative edge is inspired by a “less is more” mentality with a focus on linear expression.







Bristol GC Holiday
Cookie Swap

Holiday Feel Good Story

Jane Shaw (Pres. Cindy-Wood G.C.) and Janice Giorgianni (Portsmouth GC) were reunited after 52 years. The ladies were seated at the same table at the Federation Holiday Brunch by fate. Turns out that Jane was the maid of honor at Janice's sister-in-laws wedding in 1971 and never knew each other personally. Go figure! Janis is a winner 3 times over that day winning two raffles including Cindy-Woods centerpiece and the best gift being reintroduced after all those years.



RIFGC's Early History

Many new members have been welcomed into our garden clubs in recent years, and particularly with them in mind, as well as long-standing members who may need a refresher, the following information highlights our beginnings.

The organizational meeting of the Federation was held on May 7, 1930, at the Handicraft Club in Providence. Present were Professor John E. Hill, Mrs. Daniel Clark, Mrs. P. Pineo Chase and representatives from existing clubs. By July 11 th, they had written a constitution and by-laws that were adopted that day by representatives of nine clubs: Bristol, Oaklawn*, Jamestown, Little Compton (now Sogkonate), Primrose*, Providence County*, Rosemary*, South County, and Warwick* (*No longer in existence.)

Two years later, Barrington GC became the 10 th member club, the number necessary for membership in the National Council of Garden Clubs, Inc., since 2001 referred to as National Garden Club, Inc. and RIFGC was admitted into the membership.

The first elected president was Professor Hill of Brown University, and I have not located any information about him. Information would be most welcome!

In the early days, the Board met at various locations, including Shakespeare's Head, St. John's Cathedral, Industrial National Bank, and finally, after 55 years,



found a home at the Roger Williams Park Casino. When the Board met at Industrial National Bank, there were attendants who parked the cars for the “ladies.” One of them made the following remark, “... when the ladies drove in with their fur coats, gloves and hats, the attendant knew they could park their cars to the rear, because they were Garden Club ladies and would be there for some time!”

Readers have undoubtedly noticed that the members noted above are identified by their husbands’ names and a suffix: e.g. Mrs. Daniel Clark. It wasn’t until the early 1990’s that this practice was put to bed: suffixes were dropped, and members’ first names were used. Mrs. Jan Feldman became De Feldman and so on. We had come a long way! And we certainly were no longer wearing hats and gloves to meetings!

Information adapted from “Milestones & Memories”, compiled by Janet Friedman and Shirley Zdanuk in celebration of the RIFGC’s 60 th anniversary. Mrs. G. Dickson Kenney (whom we know as “Ginny”!) was president at that time. Thanks also to De Feldman who combed through her archives and shared this information.





J & K & K & C

Cheryl Celeste

W. Cranston GC President

Kathy Bessette

RIFGC Corresponding Secretary

Judy Gray
RIFGC President

Kathleen Damiani
RIFGC Vice President



*Festive Smiles at the
Federation Holiday Brunch*



*Centerpieces Galore
Federation Holiday Brunch*



Ruby McLookin, Edgewood GC

Like the New Look?

Hello from your newsletter designer! You don't hear from me often but I'm always here, editing and formatting each newsletter.

I hope you've enjoyed the change in our newsletter design, I'm still polishing the rough edges. This new photo-album format looks better with more pictures so less text + more images is best! But don't worry, for anyone submitting content for the newsletter without any images- I'll fill in pictures for you!

*Ruby McGlokin,
EHC & RTHC Newsletter*

