



# Rhode Island Federation of Garden Clubs

*Autumn 2021 Newsletter*

## CONTENTS

- 1 President's Report
- 3 2021 Calendar
- 4 Judy Gray Wednesdays
- 5 RI Garden Club Executives
- 9 Barbara's Book Review
- 10 Fall Bird Report
- 11 Daffodils in Bristol
- 13 Together Again Luncheon
- 15 URI Master Gardener Link
- 16 Native Monument Restoration
- 19 Environmental Concerns
- 22 Sheep & Solar
- 24 Programs & Trips
- 25 President's Poll



# PRESIDENTS REPORT

*PRESIDENT SHERYL HANSON MCGOOKIN*



This time of year, our New England landscape is made beautiful by the sun's rays filtering through colored leaves, the wind becomes almost visible as it sends leaves and yard debris tumbling and fall flowers trying to hang on to their color before the frost comes calling, asters, buddleia, feverfew, and sunflowers. I love to take a walk this time of

year even if it's simply a tour of the yard; followed by a cup of tea or a glass of wine. I hope this issue of our RIFGC Newsletter finds its way into your week.

This month's book review is about Alexander Hamilton's personal physician and his dream to build America's first botanical garden. Garden Club fall reports include Bristol Garden Club's daffodil project and the use of sheep for



landscape maintenance by Sogkonate Garden Club. Edgewood Garden Club's submission about The Swan Point Cemetery may inspire your fall schedule to include a walking tour of this very special place.

Also, in this issue Sue Redden writes about the Atlantic Puffin and Vera Bowen teaches us about animal pollinators. Sarah Lee writes about the serious threat of the Spotted lantern fly and Deb Ort explains that planting trees in the fall, like the paper birch, is worth the effort.

Please note the due dates for the NGC youth awards and Life Member Group scholarship application. November brings the quickly approaching and always popular Education Day at RWP Casino as well as our first in the series, Wet Your Whistle Wednesday's event. See the calendar to make note of the date of the spring Judges Council Horticulture Show/RIFGC board meeting. Take a peek at the Presidents Poll; see the results from the last poll and submit your answer to the new query.

*RIFGC CARING & CONNECTING*

# 2021 CALENDAR

## WEDNESDAYS

### **Wet Your Whistle Wednesdays**

With Judy Gray every 2nd Wednesday of each month at 6:30pm

03 NOV. 2021

### **Education Day**

Wednesday, 10am  
RWP Casino

25 NOV. 2021

### **Thanksgiving**

No November Board meeting this month

2 DEC. 2021

### **Holiday Luncheon & Board Meeting**

Details to come

07 APRIL 2022

### **RIFGC State Flower Show**

April 7th-10th  
"Our World" theme

02 JUNE 2022

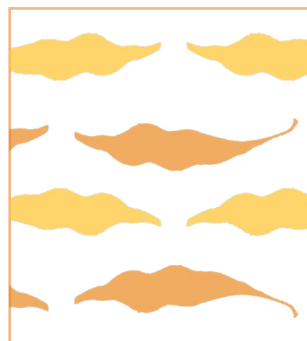
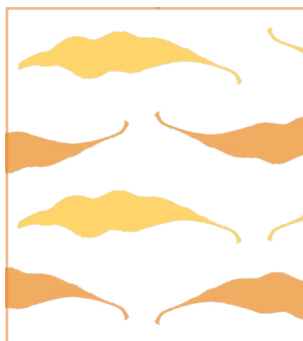
### **Judges Council Hort Show**

In coordination with Board Meeting

22 JUNE 2022

### **BGC Garden Tour & Flower Show**

Time & Place TBD



## **WET YOUR WHISTLE WEDNESDAY!**

*PULL UP A COMFY CHAIR, GRAB YOUR FAVORITE  
BEVERAGE AND LET'S GET TALKING.*

**This month's topic: Fundraising; club plans,  
success, failures. Expect Zoom link soon**

This is an open invitation to Club Presidents and representatives to join RIFGC Vice President Judy Gray in an Open Discussion Forum. This Fall, Judy will be hosting a monthly Zoom meeting to provide clubs with an opportunity to exchange ideas on a variety of topics including how to increase membership, submit awards, and ideas for successful programs and events. This is a great opportunity to broaden our spectrum by working together. Judy is looking for topic ideas from the membership, so please email her with any suggestions you have.

Monthly Zoom meeting will be held on the 2nd  
Wednesday of each month at 6:30pm to 7:15pm

*JUDY.GRAY123@GMAIL.COM*

*(603) 707-7785*

# RI GARDEN CLUB EXECUTIVES

NEW EXECUTIVE BOARDS AMONGST THE RI CLUBS

## HAMEHO GARDEN CLUB OFFICERS



VP of Membership - Michele Danish

President - Aleta Johnson

Secretary - Debbi Clickner

Treasurer - Joan Silva.

# RI GARDEN CLUB EXECUTIVES

NEW EXECUTIVE BOARDS AMONGST THE RI CLUBS

WESTERN CRANSTON GARDEN CLUB OFFICERS



Co-Presidents - Sara Worthington & Cheryl Celeste

Vice President - Kathleen Damiani

Recording Secretary - Karen Carloni

Corresponding Secretary - Danielle Meola (*not pictured*)

Treasurer - Odette Turenne



# RI GARDEN CLUB EXECUTIVES

NEW EXECUTIVE BOARDS AMONGST THE RI CLUBS

## GENTIAN GARDEN CLUB OFFICERS



President - Cindy Gianfrancesco

1st VP - Lorraine Whittemore

2nd VP - Cheryl Hahn

2nd VP - Nancy Mende

Secretary - Carol Horta

Treasurer - Kathy Giovine



# RI GARDEN CLUB EXECUTIVES

NEW EXECUTIVE BOARDS AMONGST THE RI CLUBS

## PORTSMOUTH GARDEN CLUB OFFICERS



President - Mary Di Bara

First Vice President - Linda Howard

Second Vice President - Jean Gadsby

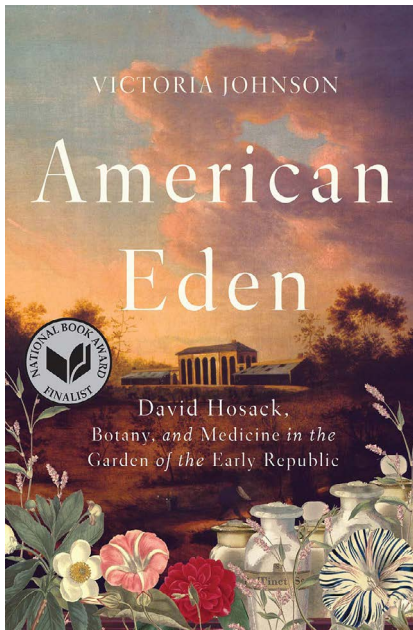
Treasurer - Marilyn Brockway

Recording secretary- Janet Shrake

Corresponding Secretary - Deb Mack

# BARBARA'S BOOK REVIEW

AMERICAN EDEN, WRITTEN BY DAVID HOSACK



2020 gave us all an idea what the world was like without medicine, the Pandemic was an insight into the past. “American Eden” is about amazing people- botanists, doctors, explorers, who brought to us the names of beautiful plants we have in our gardens today, and the medicines to keep us healthy.

“Botany and Medicine in the Garden of the Early Republic”  
..... almost too wonderful to imagine!!

BARBARA CURRY, EDGEWOOD GC

# FALL BIRD REPORT

ATLANTIC PUFFIN – *ALCA ARTICA*

I thought it would be interesting to write about the Atlantic Puffin. This is a bird that we don't see too often as they are found mostly north of us.



Puffins are stocky, short-tailed birds, with black upper parts and white or brownish-grey underparts. The head has a black cap, the face is mainly white, and the feet are orange-red. The bill appears large and colorful during breeding season. The colorful outer part of the bill is shed after the breeding season, revealing a smaller

duller true bill underneath. Although puffins are vocal in their breeding colonies, they are silent at sea. They fly relatively high above the water typically to 33 ft. They dive between 30ft – 200 ft under water searching for food. They can carry as many as ten fish in their bill. Puffins breed in large colonies on coastal cliffs and offshore islands, nesting in crevices among rocks or in burrows in the soil. Like many seabirds, the Atlantic Puffin is long-lived, averaging 30 plus years. And like other birds with long lifespans, the young take several years to mature. Puffins do not breed until they are 3–6 years old. The Atlantic Puffin is the official bird of Newfoundland and Labrador, Canada. Half of North America's Atlantic Puffins breed in one location: Witless Bay, Newfoundland, Canada.

SUE REDDEN, BIRD CHAIR

# DELIGHTFUL DAFFODILS IN BRISTOL

## BRISTOL GARDEN CLUB REPORT

The Bristol Garden Club launched the Delightful Daffodil Project, an effort to plant hundreds of thousands of King Alfred bulbs throughout the Town. On Saturday, September 25, volunteers fanned out across Bristol to plant 5,000 bulbs to help beautify the town this spring. Armed with trowels, shovels and buckets of bulbs, over 60 volunteers planted the bulbs along Rt. 114, newly-designated as the Revolutionary Heritage Byway, the only scenic by in the State of Rhode Island.

The Planting Day event was supported by a \$2,000 grant from the National Scenic Byway Foundation & the American Park Network to the Bristol Garden Club in partnership with the Town of Bristol. The “Love Our Byways” micro-grant is sponsored by the Foundations automotive partner, Toyota Motor North America. The Bristol Project is one of 25 selected from across the country.

The Delightful Daffodil Project is a community effort, conceived of by the Garden Club, to enhance the natural beauty of the town by promoting the planting of thousands of daffodils each fall. The goal is to ultimately create a pathway of 1,000,000 golden daffodils winding through town. Daffodils, which naturalize easily and become more numerous each year, are intended to draw more attention to Bristol’s official “national byway” with each spring season, and create a flush of cheerful color at sites along the route and around town.



The plan is modeled after Newport's Daffodillian Project which has planted 1.2 million daffodils in Newport County. After a presentation by John Hirschboeck, the Project's leader, the Club adapted the concept for Bristol. With a matching grant from the Town and donations from businesses, the multi-year venture began modestly in 2020 with 3,000 bulbs planted in public spaces, private residences and commercial properties. The September event served as the public launch and drew an enthusiastic response from the community. Landmark locations including Linden Place, the Herreshoff Museum, and the North Burial Ground were among those joining in the planting event. Mrs. Perry's Garden on Hope Street, which is maintained by the Club, received a generous share.

With funding from Bristol Toyota, Town of Bristol, and the sale of bulbs, the Club planned to plant an additional 1,000 daffodils in 2021.



# TOGETHER AGAIN LUNCHEON

SWAN POINT CEMETARY



After a year of being cooped up at home, except for occasional work in a public garden or gathering in outdoor spaces, the Edgewood Garden Club held its September meeting at Swan Point Cemetery's Gray Coale Reception Room. It was

good to be all together after a long pandemic pause. It was a great way to launch the 2021-2022 Program Year.

Members and a few guests enjoyed a light luncheon of sandwiches, salads, chips, tea, coffee and desserts by Pranzi Catering. They also heard Swan Point Horticulturist Kelly Perry speak on the history of this unique Rhode Island landmark. The Providence cemetery will soon celebrate its 175th Anniversary with a series of walking tours and other programs highlighting trees, gardens, landscaping and stately buildings and monuments on its 200-acre site.





Located on Providence's East Side and bordering the Seekonk River, Swan Point is listed on the National Register of Historic Sites. It is not only the final resting place of many prominent Rhode Islanders, but a popular green space that draws residents from throughout the state.



*PAUL NUNES, RIFGC*





**WANT TO BECOME A URI MASTER  
GARDENER? CLICK THE LINK  
BELOW TO GET STARTED**

---

[HTTPS://WEB.URI.EDU/MASTERGARDENER/  
CORE-TRAINING-FAQS/](https://web.uri.edu/mastergardener/core-training-faqs/)

# INDIGENOUS NATURAL MONUMENT RESTORATION

*BEARS EARS, GRAND STAIRCASE, NORTHEAST  
CANYONS, & SEAMOUNTS RESTORED!*

This is a great feeling. Today, three national monuments- Bears Ears, Grand Staircase-Escalante, and Northeast Canyons and Seamounts- were finally restored. We've been waiting for this day since 2017 when Trump illegally stripped protections from these monuments as a gift to his buddies in the oil, gas, and minings industries.

The Bears Ears restoration is a huge victory for the Inter-Tribal coalition of the Navajo Nation and the Hopi, Ute Indian, Ute Mountain Ute and Pueblo of Zuni Tribes that spent years lobbying for the monument to be created- and then kept up the fight after Trump tried to dismantle it.



In the words of Chairman Shaun Capoose of the Ute Indian Tribe, “President Biden did the right thing restoring the Bears Ears National Monument. For us the Monument never went away. We will always return to these lands to manage and care for our sacred sites, waters and medicines.... We battled for this Monument because it matters.”

The board of Grand Staircase-Escalante Partners said, “This act of preservation safeguards the thousands of unique plant, animal, and insect species that rely on the ecosystems connected throughout the Colorado Plateau. It enables world-renowned research opportunities for paleontology and climate change. And it honors the sacred landscape home to Indigenous Peoples, including the Paiute, Hopi, Zuni, Dine/Navajo, Ute, Jemez Pueblo, Ute Mountain Ute, and Acoma nations.”

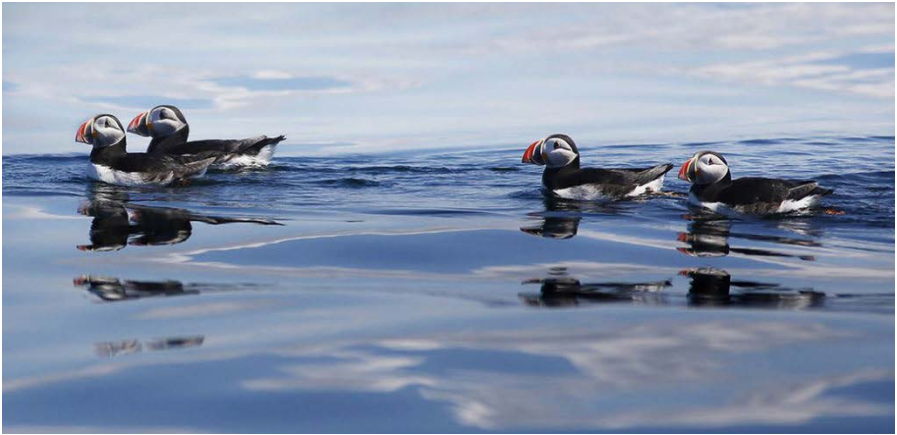


And of course, millions of people sent public comments, made phone calls, attended webinars, and showed up at protests in support of monument protections -- even if they'd never visited these places in person. All of that work has finally paid off, and we hope you can take a moment to savor the victory.

Together, these three monuments cover over 5 million acres of canyon, forests, desert, and ocean. Protecting them is an important step towards our goal of conserving 30% of our lands and waters by 2030. Over the past 25 years, Grand Staircase-Escalante has also been proof that monument designations can help local economies flourish. These actions set a path forward for a better future for everyone.

[Send a message thanking President Biden and Interior Secretary Haaland for keeping their promise](#) to restore our national monuments. Thank you for your activism,

*CARLY FERRO, UTAH CHAPTER DIRECTOR, SIERRA CLUB*



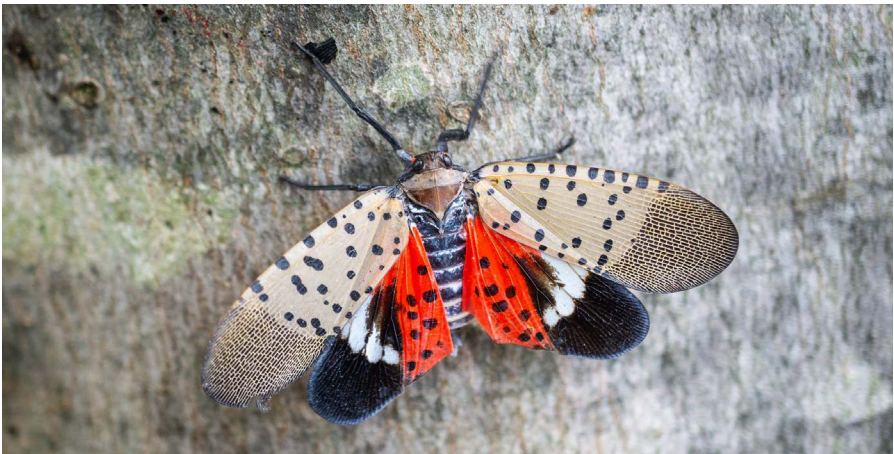


# ENVIRONMENTAL CONCERNS

## SPOTTED LANTERNFLY ALERT

I like the August 30th Associated Press article headline: **The spotted lanternfly has arrived in New England. If you see one, squash it.** We are just asking that you take a picture and let RI DEM know first.

Yes, a spotted lanternfly has been spotted in Rhode Island in an area in Warwick near Jefferson Boulevard and a recent second discovery in West Greenwich so be on the lookout and be on the ready to stomp. This nasty pest reproduces quickly in great numbers so each squashed moth really counts. Now, between September and December, the flies are laying their eggs. The mud-like egg masses pictured below form along trees, cars, lawn furniture and other hard surfaces and should be scraped off and disposed of ASAP. Click on [this link](#) to see how.







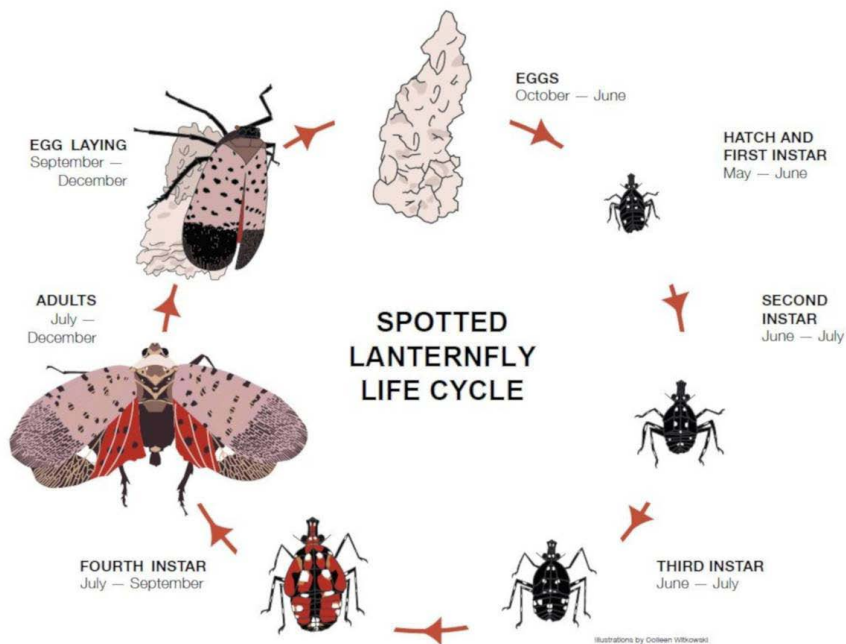
Egg mass of spotted lanternfly. Eggs on right are covered by secretion, eggs on left are not.

Pennsylvania has in the span of just 6 years become outnumbered and the pests now threaten \$18 billion worth of Pennsylvania agriculture. The spotted lanternfly is thought to have come over from China in a 2012 cut stone shipment. It is particularly attracted to the Chinese invasive tree of heaven which is its homeland host but if the pest got established here it could effect the vineyards in Newport as well as other local fruit trees and native hardwoods like maple, oak, and walnut. They feed by piercing the bark of trees and vines to tap into the sap. They are big and remove a large amount of sap excreting sticky “honeydew” that coat the tree or plant and grows the black sooty mold we also see with aphid infestations. Because of this loss of sap/ carbohydrates the plants die back and can eventually die altogether.



Check out the illustration below to see what spotted lanternfly look like at different times of year. Be on the lookout and if you spot them squash, stomp and kill these pests before they kill our local trees and crops. Wait, back up and please take a photo and let RI DEM know. They are VERY interested in knowing specifics. You can fill out their online report form [here](#).

SARAH LEE, EDGEWOOD GARDEN CLUB



# SHEEP & SOLAR

*SHEEP ARE THE BEST LANDSCAPERS!*

The Sogkonate Garden Club in Little Compton, RI. works to educate its members and our community on topics that are critical to our shared environmental future: using native plants, designing sustainable landscapes, and promoting gardening practices that contribute to ecological well being. Our annual programming invites guests who can expand our knowledge and skills in each of these areas.

One recent program offered a fun and informative glimpse into a landscape maintenance strategy that ties old gardening traditions to contemporary environmental goals. Daniel Finnegan, Solar Shepherd LLC, shared his experience of using a flock of 200 sheep to maintain the landscapes around ground mounted solar installations throughout southern New England. Mowing and weed whacking can cause damage to solar cells and getting landscape equipment in and around the solar mounts is challenging. A flock of grazing sheep presents an environmentally sound option to more chemical dependent or labor intensive landscape clearing solutions.



Daniel is both an exuberant shepherd and insightful environmentalist. In addition to providing local solar companies with an environmentally sound solution to their landscape maintenance problems, he is working with a team of scientists on project Fuzz & Buzz to find the right mix of pollinator perennials to use in replanting the cleared areas. These plantings contribute to the overall health of the local environment and allow the solar installations to generate electricity at maximum capacity.



To expand the “lambscaping” business Daniel has begun to offer his sheep to residential clients. Depending on the size of the area to be cleared the sheep work from one to two weeks. Several members of Sogkonate invited small herds of sheep onto their property to clear invasive plant material. The sheep arrived with a portable and flexible electric fence for protection and a water source.

Daniel understands that we all need to be vigilant about placement of solar installations to ensure that open spaces and forests are protected. He has experimented with installations on “disturbed” ground such as highway medians and capped landfills. The question of what can be replanted after invasives are gone is something his clients and others continue to explore. Finding what works best for each cleared area can contribute to our shared understanding of how to grow healthy and sustainable landscapes for generations to come.

# PROGRAMS & TRIPS

## CONTRIBUTIONS

Many thanks to all of you who contributed names and ideas for our Program Speakers Book. I hope this tool proved useful to club program chairs as they worked on events for this year. And a very special “thank you” to Vera Bowen, with whom I worked side-by-side on this project.

This directory was emailed in the spring to all RIFGC club presidents and Federation board members. If you do not have it, please visit the Federation website, [www.rigardenclubs.org](http://www.rigardenclubs.org). Go to Members Login and click 2021 RIFGC program speaker’s book.

Next on the agenda is the development of a listing of destinations of interest to our members, from gardens, farms and museums to sites of environmental importance. PLEASE send suggestions to me of spots you visited in the past or perhaps just learned about. Your input is a great help as begin this new project which will, in effect, be part II of the Speakers Book.

Please feel free to contact me if you need assistance

Phone: (401) 440-8369

Email: [sandi.tinyk7@gmail.com](mailto:sandi.tinyk7@gmail.com)

*SANDI TINYK, RIFGC PROGRAMS CHAIRMAN*

## **PRESIDENT'S POLL**

---

**Which plants in your garden have stood the tests of winter best?**

*SUBMIT YOUR RESPONSE BY  
TEXTING IT TO (401) 639-8952*

**Some answers to last  
Newsletter's question:**

- × St John's Wort
- × Garlic Chives
- × Mountain Mint
- × Bee Balm
- × Coneflower
- × Sheffield Daisies